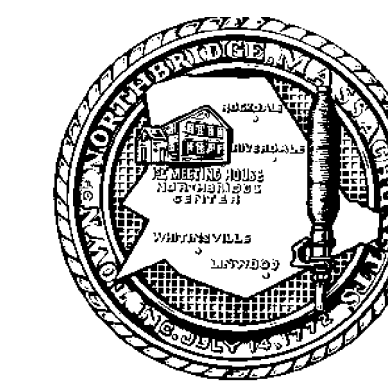




Source: Data provided by the Town of Northbridge, the Central Massachusetts Regional Planning Commission (CMRPC), massDOT/Office of Transportation Planning Geospatial Resources Section and the Office of Geographic Information (MassGIS), Commonwealth of Massachusetts, Information Technology Division.

Information depicted on this map is for planning purposes only. This information is not adequate for legal boundary definition, regulatory interpretation, or parcel-level analysis. Use caution interpreting positional accuracy.

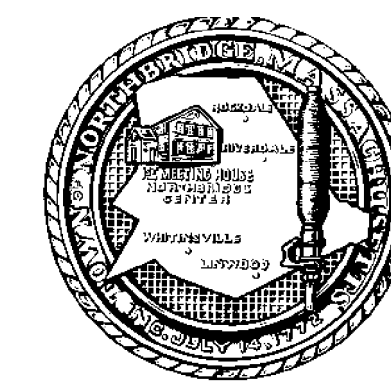
Produced by the Central Massachusetts Regional Planning Commission (CMRPC), One Mercantile Street - Suite 520, Worcester, MA 01608



# ZONING MAP

## NORTHBRIDGE, MA

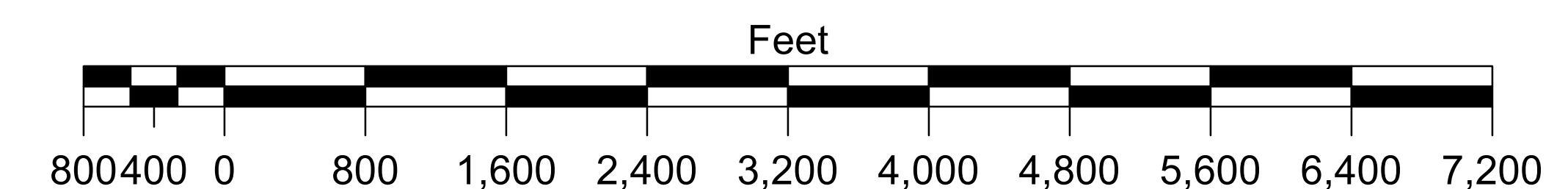
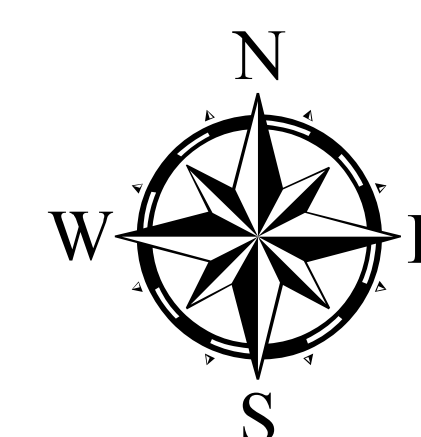
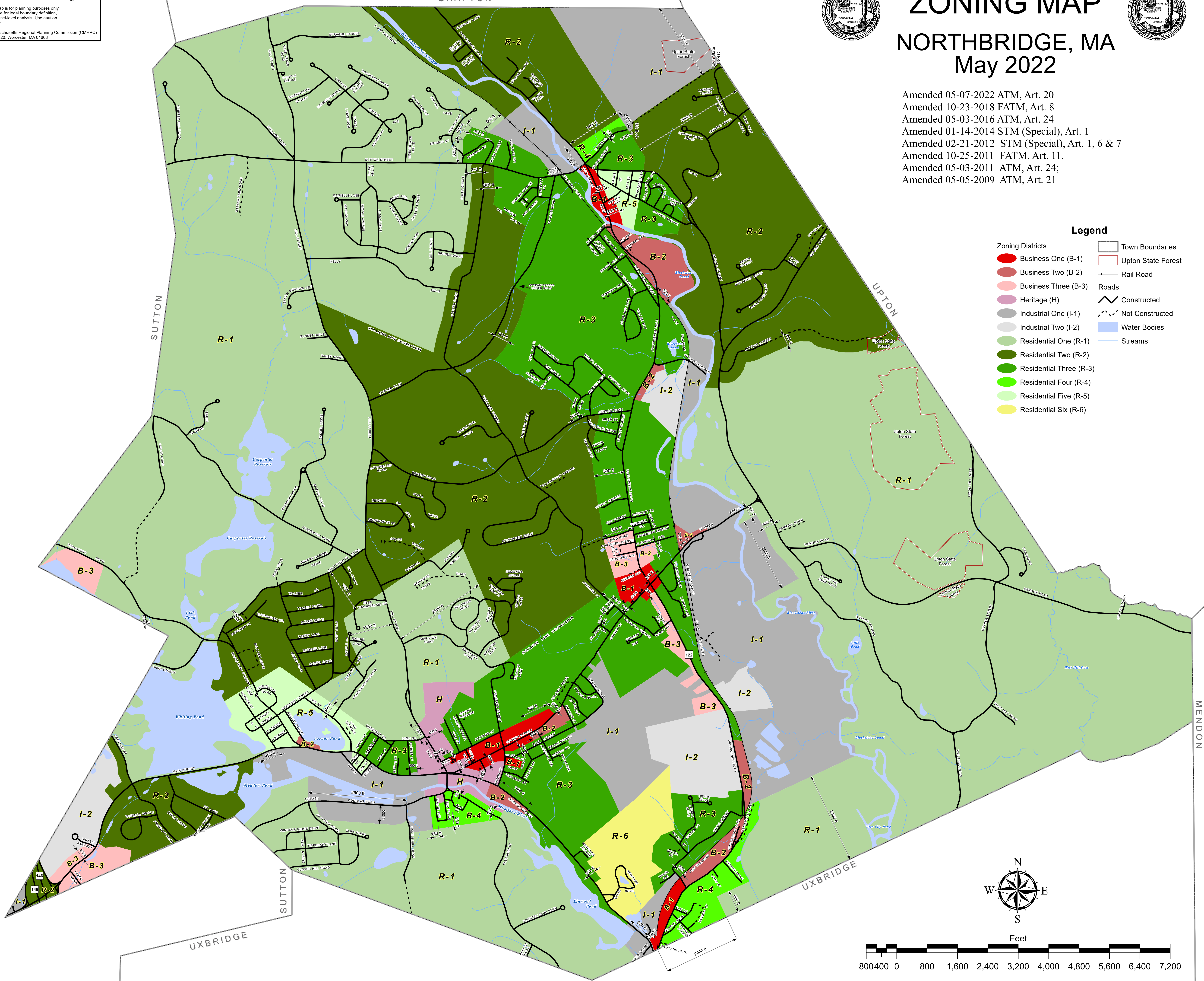
### May 2022



Amended 05-07-2022 ATM, Art. 20  
 Amended 10-23-2018 FATM, Art. 8  
 Amended 05-03-2016 ATM, Art. 24  
 Amended 01-14-2014 STM (Special), Art. 1  
 Amended 02-21-2012 STM (Special), Art. 1, 6 & 7  
 Amended 10-25-2011 FATM, Art. 11.  
 Amended 05-03-2011 ATM, Art. 24;  
 Amended 05-05-2009 ATM, Art. 21

#### Legend

- |                         |                    |
|-------------------------|--------------------|
| <b>Zoning Districts</b> | Town Boundaries    |
| Business One (B-1)      | Upton State Forest |
| Business Two (B-2)      | Rail Road          |
| Business Three (B-3)    | Roads              |
| Heritage (H)            | Constructed        |
| Industrial One (I-1)    | Not Constructed    |
| Industrial Two (I-2)    | Water Bodies       |
| Residential One (R-1)   | Streams            |
| Residential Two (R-2)   |                    |
| Residential Three (R-3) |                    |
| Residential Four (R-4)  |                    |
| Residential Five (R-5)  |                    |
| Residential Six (R-6)   |                    |



**NOTE**  
 This map is not the official street map for the town.  
 Information regarding the official status of any street  
 in town can be obtained at the Town Clerk's office.