

NOTABLY NORTHBRIDGE

The town of Northbridge is in south central Massachusetts. It is well known for its mills and their impact during the Industrial Revolution.

Northbridge has four villages: Rockdale, Linwood, Riverdale, and Whitinsville.

In 2022, Northbridge celebrated the 250th anniversary of its incorporation.



**POPULATION GREW 3.99%
BETWEEN 2010 TO 2020**



16,298

Population Estimate

6,435

Households

INCOME & HOUSING

\$85,503

Median Household Income

5.5%

Persons Living in Poverty

\$334,200

Median Value of Owner-occupied Housing Units

\$978

Median Gross Rent

EDUCATION

93.5%

High School Graduate



35%

Bachelors Degree Or Higher

AGE



0-4 years old; 7.1%

5-18 years old: 21.1%

19-64 years old: 55.3%

65+ years old: 16.5%

RACE, ETHNICITY & LANGUAGES

91% White

8.3% Latino or Hispanic

5.4% Two or more races

0.5% Black

11% speak a language other than English



5% Foreign born persons

WHITINSVILLE SOCIAL LIBRARY

Whitinsville Social Library (WSL) is the public library for the town of Northbridge. WSL is a member of CWMARS, a large regional library consortium.

OUR PAST

WSL was founded in 1844 as a private library. Readers paid \$1.50 a year, about \$60 today, for access to two books at a time. It became a public library in 1876.

In 2015, voters approved a town bylaw stating that the library could never change its name.

WSL TODAY

49,446

Physical Books

51

Hours Open A Week

4,870

Northbridge Residents With Active Library Accounts

68,843

Physical Items Circulated

187,660

E-items Available Through Overdrive

17,618

E-Books Checked Out

THE BUILDING



1913

Built

2000

Last Renovated

California Redwood

The Signature Woodwork

STAFF & VOLUNTEERS

2

Full-time Professional Librarians

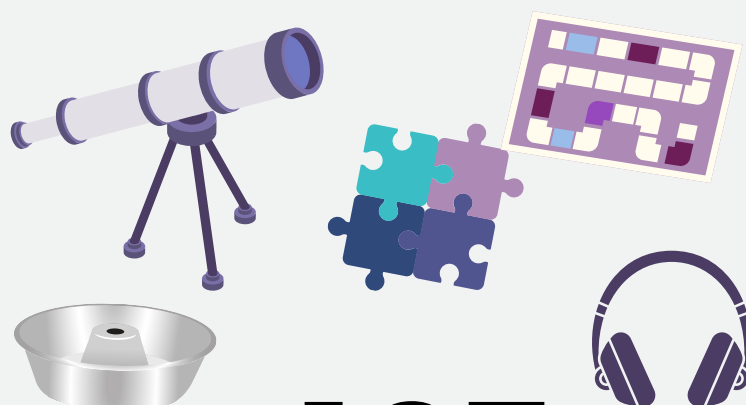
8

Part-time Staff

194.5

Hours Volunteered

LIBRARY OF THINGS



187

Non-traditional Items Patrons Can Borrow From WSL



THE COVID-19 PANDEMIC

1,216

Parking Lot Pick Up Appointments

30

Days Closed Due to Omicron Variant

