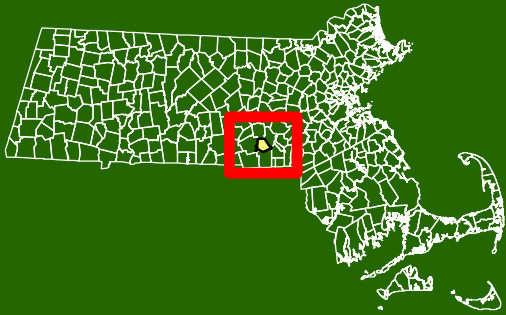


Town of Northbridge 2022-2029 Open Space & Recreation Plan

Legend

- Town Boundary
- Active Railroad
- Other Roads
 - Interstate
 - U.S. Route
 - State Route
 - River, Stream
 - Lake, Pond



Source: Data provided by the Town of Northbridge, Central Massachusetts Regional Planning Commission (CMRPC), Executive Office of Energy and Environmental Affairs' (EEA), massDOT and the Office of Geographic Information (MassGIS), Commonwealth of Massachusetts, Information Technology Division.

Information depicted on this map is for planning purposes only. This information is not adequate for legal boundary definition, regulatory interpretation, or parcel-level analysis. Use caution interpreting positional accuracy.

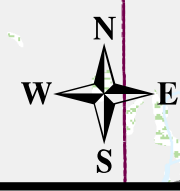
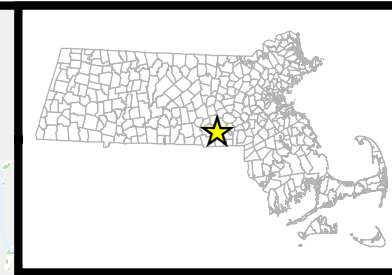
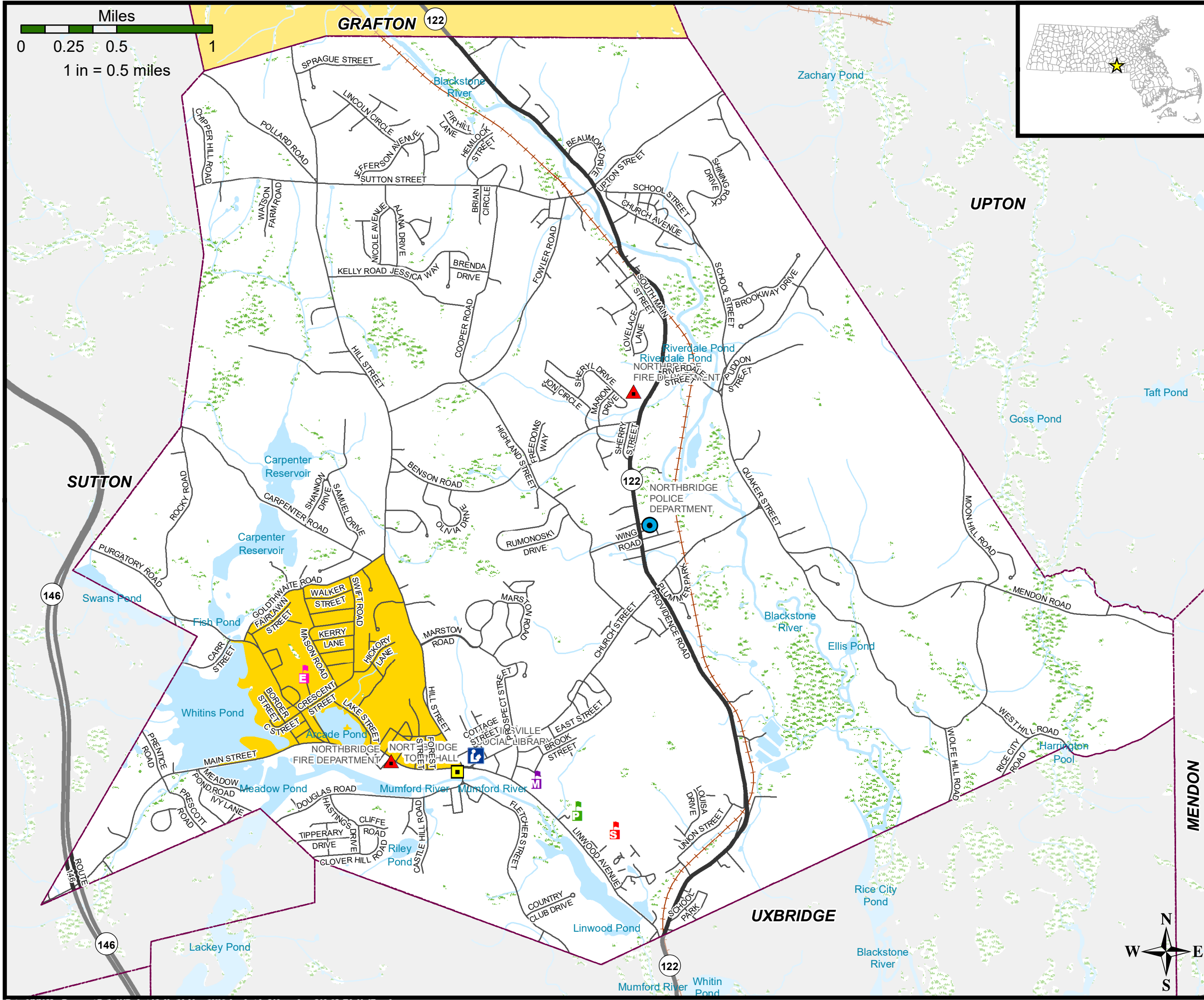


Produced by
One Mercantil Street
Suite 520
Worcester, MA 01608

Town of Northbridge
2022-2029
Open Space &
Recreation Plan


Legend

- Town Boundary
- Major Road
- Local Road
- Active Rail Service
- River, Stream
- Lake, Pond
- MassDEP Wetlands
- Environmental Justice 2020 Populations
 - EJ Criteria, by Block Group
 - Minority
- Other Features
 - Town Hall (07/2017)
 - Public Library
 - Police
 - Fire Dept. (06/2022)
 - Schools (PK-12)(05/2022)
 - Private
 - Public Elementary
 - Public Middle
 - Public Secondary



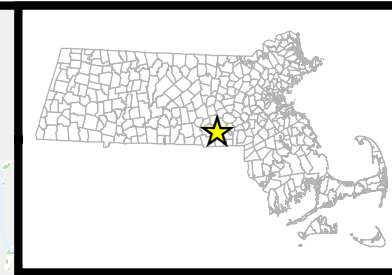
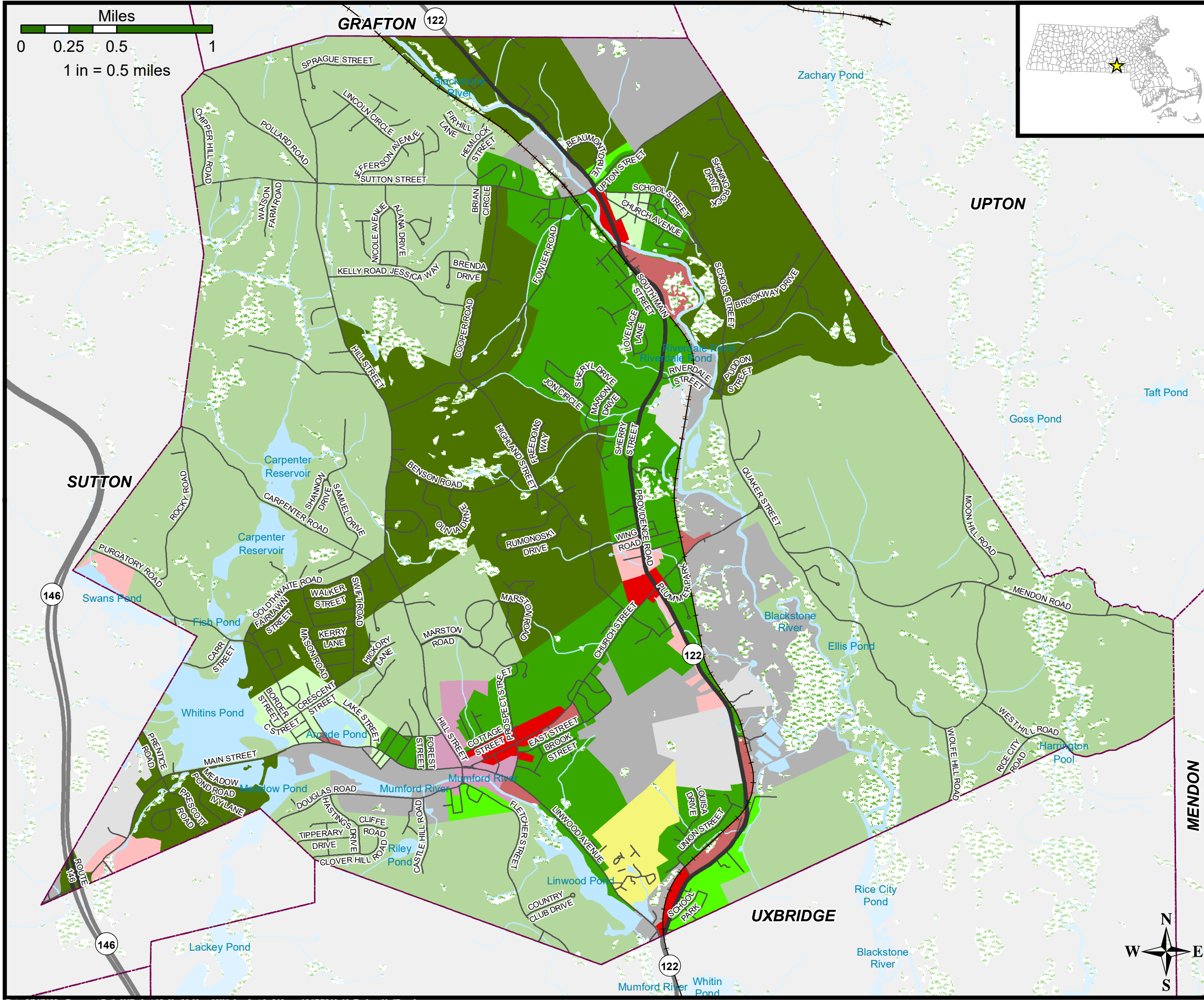
Source: Data provided by the Town of Northbridge, Central Massachusetts Regional Planning Commission (CMRPC), Executive Office of Energy and Environmental Affairs' (EEA), massDOT and the Office of Geographic Information (MassGIS), Commonwealth of Massachusetts, Information Technology Division.

Information depicted on this map is for planning purposes only. This information is not adequate for legal boundary definition, regulatory interpretation, or parcel-level analysis. Use caution interpreting positional accuracy.



Produced by
One Mercantil Street
Suite 520
Worcester, MA 01608

Town of Northbridge 2022-2029 Open Space & Recreation Plan



Legend


Town Boundary	Lake, Pond
Active Railroad	River, Stream
Major Road	MassDEP Wetlands
Local Road	

Zoning Districts

Business One (B-1)
Business Two (B-2)
Business Three (B-3)
Heritage (H)
Industrial One (I-1)
Industrial Two (I-2)
Residential One (R-1)
Residential Two (R-2)
Residential Three (R-3)
Residential Four (R-4)
Residential Five (R-5)
Residential Six (R-6)

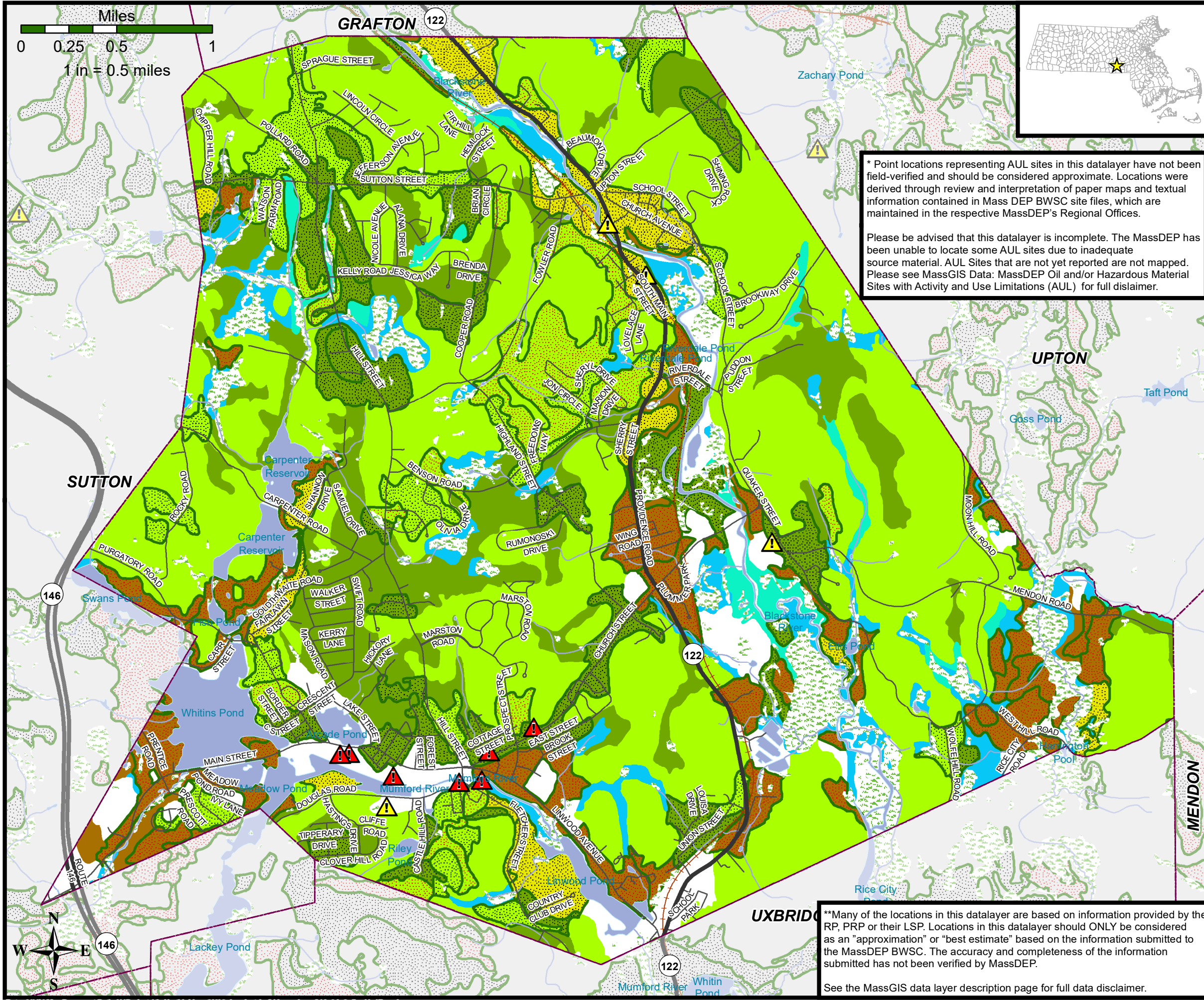
Source: Data provided by the Town of Northbridge, Central Massachusetts Regional Planning Commission (CMRPC), Executive Office of Energy and Environmental Affairs' (EEA), massDOT and the Office of Geographic Information (MassGIS), Commonwealth of Massachusetts, Information Technology Division.

Information depicted on this map is for planning purposes only. This information is not adequate for legal boundary definition, regulatory interpretation, or parcel-level analysis. Use caution interpreting positional accuracy.



Produced by
One Mercantil Street
Suite 520
Worcester, MA 01608

Town of Northbridge
2022-2029
Open Space & Recreation Plan



* Point locations representing AUL sites in this datalayer have not been field-verified and should be considered approximate. Locations were derived through review and interpretation of paper maps and textual information contained in Mass DEP BWSC site files, which are maintained in the respective MassDEP's Regional Offices.

Please be advised that this datalayer is incomplete. The MassDEP has been unable to locate some AUL sites due to inadequate source material. AUL Sites that are not yet reported are not mapped. Please see MassGIS Data: MassDEP Oil and/or Hazardous Material Sites with Activity and Use Limitations (AUL) for full disclaimer.

Legend

- Town Boundary
- Major Road
- Local Road
- Active Rail Service
- River, Stream
- Lake, Pond
- MassDEP Wetlands
- MassDEP Tier 21E Sites** (12/2021)
- AUL Location* (12/2021)
- SSURGO-Certified NRCS Top 20 Soils: Prime Farmland Soils (11/2021)
- All Areas are Prime Farmland
- Farmland of Statewide Importance
- SSURGO-Certified NRCS Top 20 Soils: Drainage Class (11/2021)
- Excessively drained
- Somewhat excessively drained
- Well drained
- Moderately well drained
- Poorly drained
- Very poorly drained

**Many of the locations in this datalayer are based on information provided by the RP, PRP or their LSP. Locations in this datalayer should ONLY be considered as an "approximation" or "best estimate" based on the information submitted to the MassDEP BWSC. The accuracy and completeness of the information submitted has not been verified by MassDEP.

See the MassGIS data layer description page for full data disclaimer.

Source: Data provided by the Town of Northbridge, Central Massachusetts Regional Planning Commission (CMRPC), Executive Office of Energy and Environmental Affairs' (EEA), massDOT and the Office of Geographic Information (MassGIS), Commonwealth of Massachusetts, Information Technology Division.

Information depicted on this map is for planning purposes only. This information is not adequate for legal boundary definition, regulatory interpretation, or parcel-level analysis. Use caution interpreting positional accuracy.

Produced by
One Mercantil Street
Suite 520
Worcester, MA 01608

Town of Northbridge 2022-2029 Open Space & Recreation Plan

Legend

Town Boundary

Major Road

Local Road

Scenic Roads

Active Rail Service

River, Stream

Lake, Pond

MassDEP Wetlands

Town Hall (07/2017)

Public Library

Police

Fire Dept. (06/2022)

Schools (PK-12)(05/2022)

Private

Public Elementary

Public Middle

Public Secondary

MHC Historic Inventory (7/2022)

Nat'l Register of Historic Places

NRHP and LHD

Inventoried Property

Nat'l Register of Historic Places

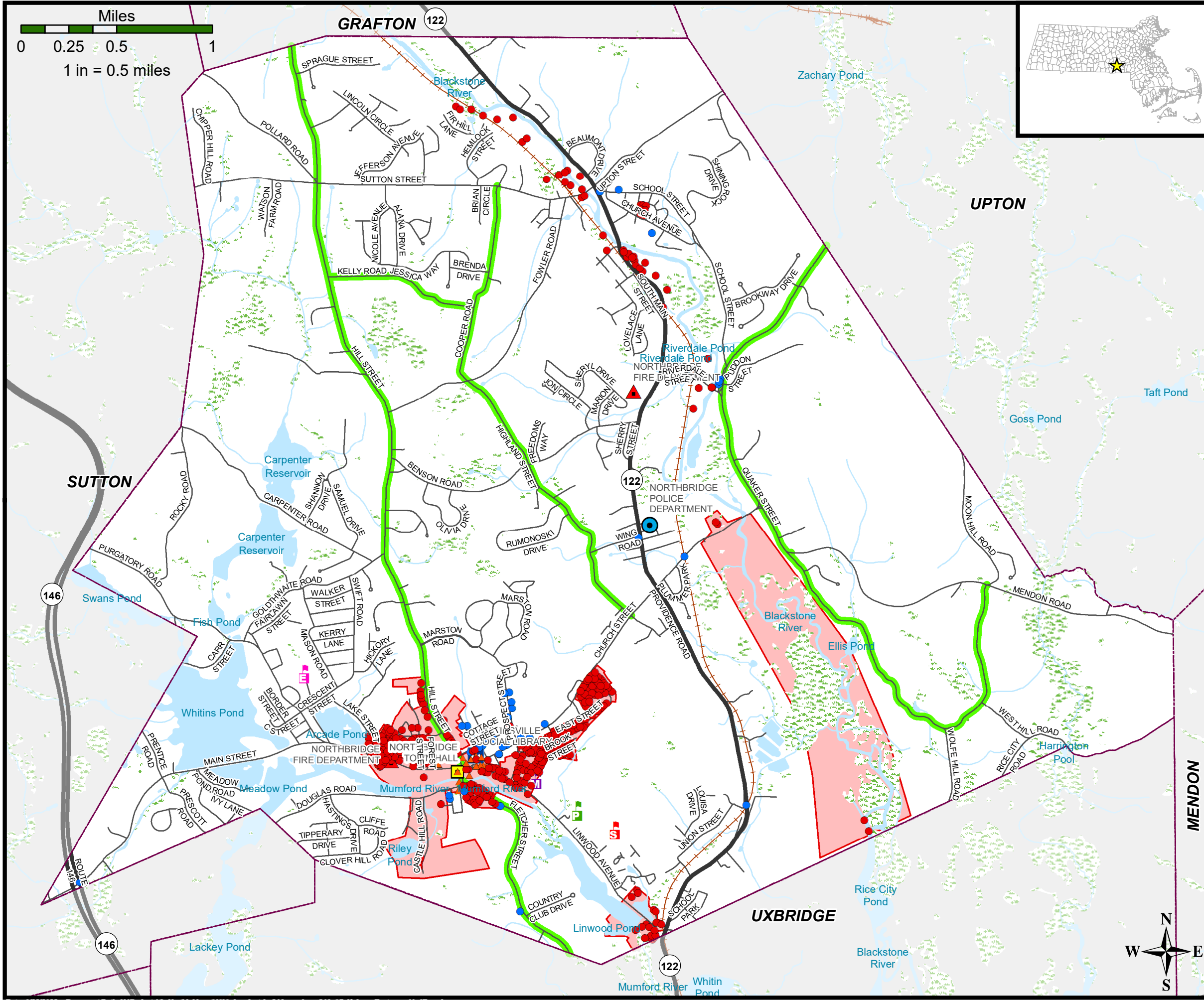
Local Historic District

Inventoried Area

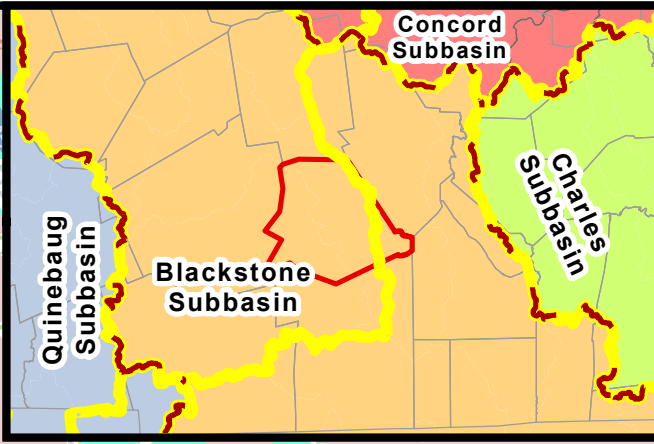
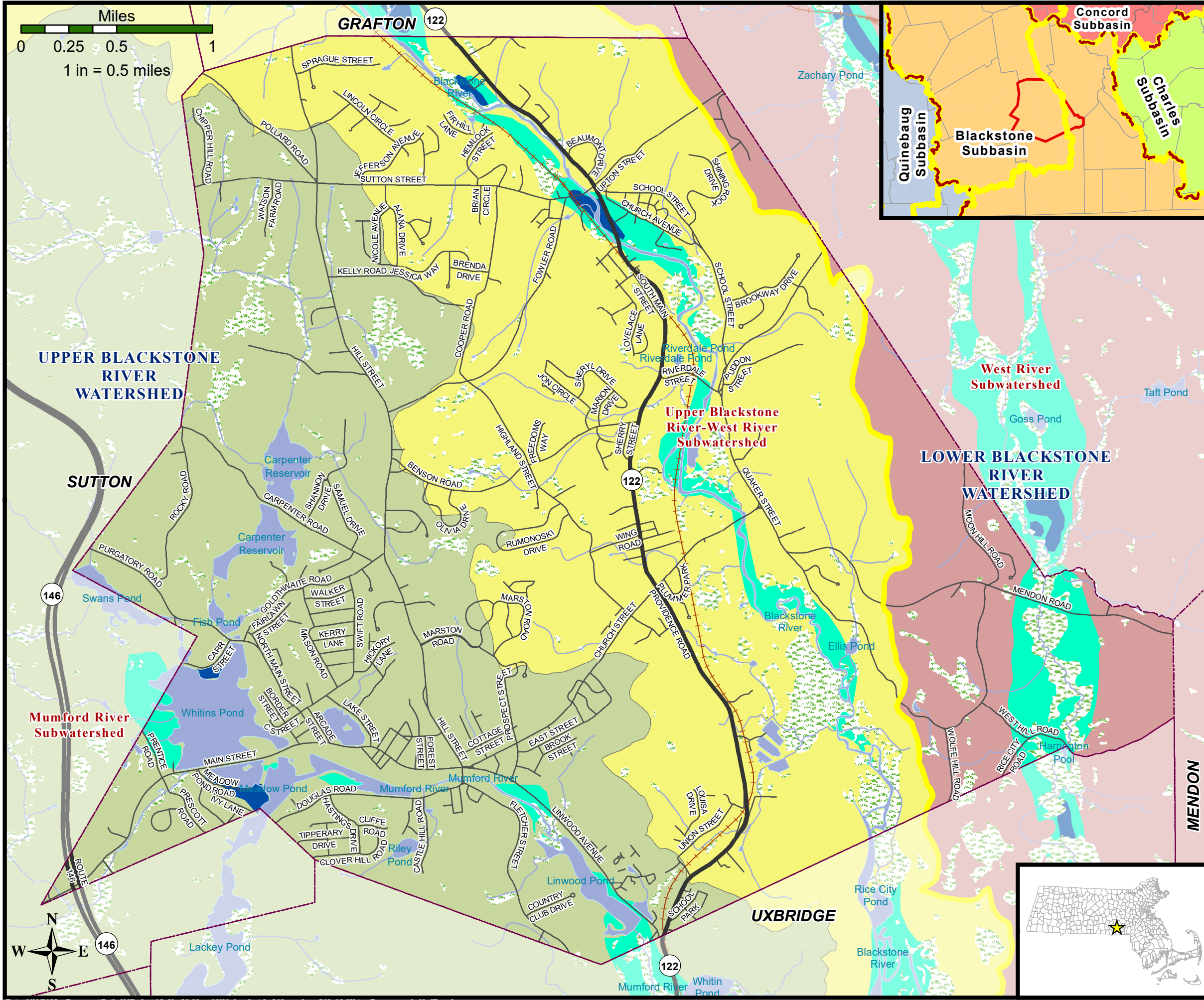
Source: Data provided by the Town of Northbridge, Central Massachusetts Regional Planning Commission (CMRPC), Executive Office of Energy and Environmental Affairs' (EEA), massDOT and the Office of Geographic Information (MassGIS), Commonwealth of Massachusetts, Information Technology Division.

Information depicted on this map is for planning purposes only. This information is not adequate for legal boundary definition, regulatory interpretation, or parcel-level analysis. Use caution interpreting positional accuracy.

Produced by
One Mercantil Street
Suite 520
Worcester, MA 01608



Town of Northbridge
2022-2029
Open Space & Recreation Plan



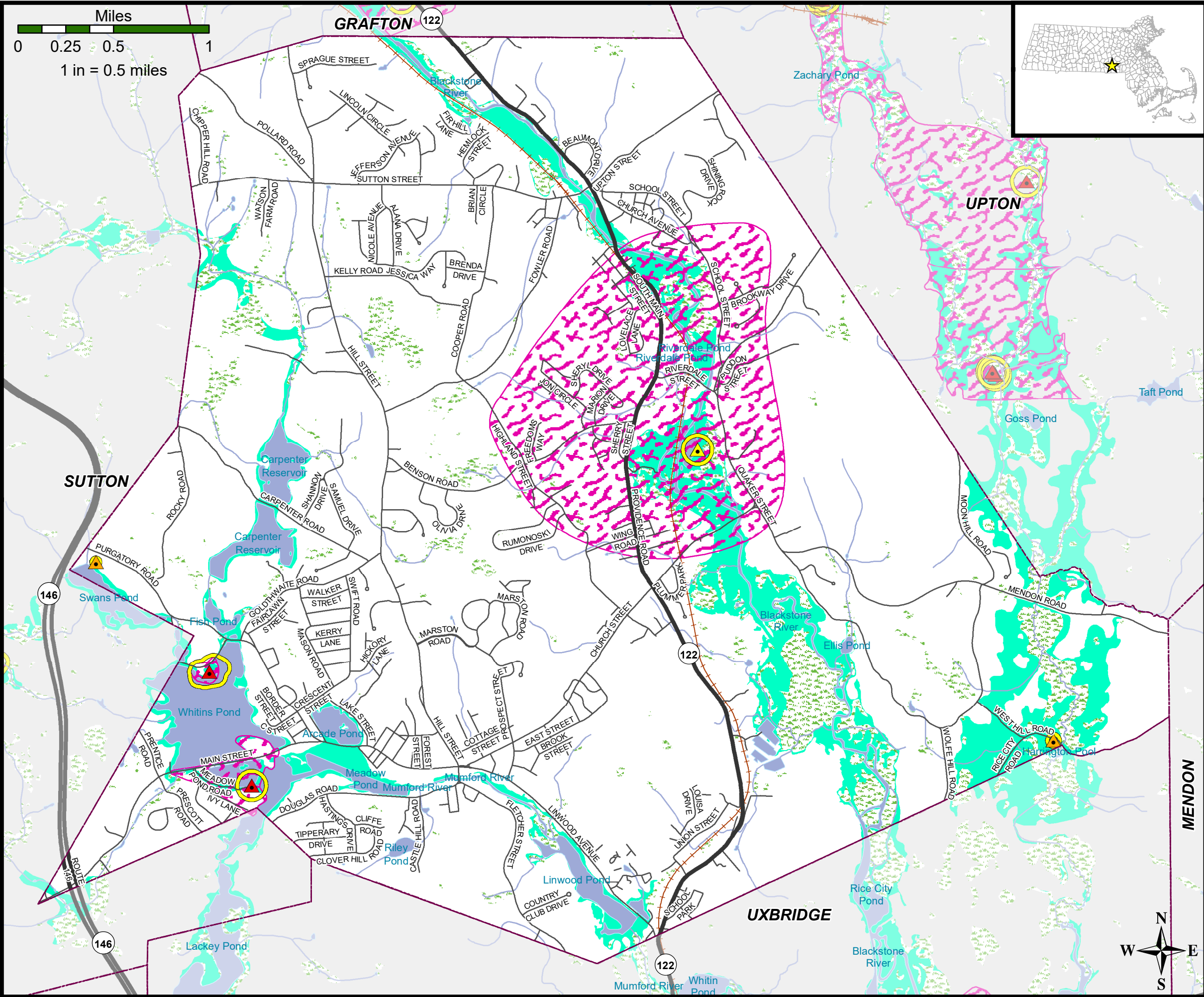
Legend

- Town Boundary
- Major Road
- Local Road
- Active Rail Service
- River, Stream
- Lake, Pond
- MassDEP Wetlands
- Aquifers
 - High Yield (> 300 gpm)
 - Medium Yield (100-300 gpm)
- NRCS HUC Subbasin Boundary
- NRCS HUC Watershed Boundary
- NRCS HUC Subwatersheds
 - Mumford River
 - Upper Blackstone River-West River
 - West River

Source: Data provided by the Town of Northbridge, Central Massachusetts Regional Planning Commission (CMRPC), Executive Office of Energy and Environmental Affairs' (EEA), massDOT and the Office of Geographic Information (MassGIS), Commonwealth of Massachusetts, Information Technology Division.

Information depicted on this map is for planning purposes only. This information is not adequate for legal boundary definition, regulatory interpretation, or parcel-level analysis. Use caution interpreting positional accuracy.

Produced by
One Mercantil Street
Suite 520
Worcester, MA 01608




Town of Northbridge 2022-2029 Open Space & Recreation Plan

Legend

- Town Boundary
- Major Road
- Local Road
- Active Rail Service
- River, Stream
- Lake, Pond
- MassDEP Wetlands
- DEP Approved Zone I
- Approved Wellhead Protection Areas- Zone II (03/2022)
- 100-year Flood Area (FEMA National Flood Hazard Layer, DFIRM)
- Public Water Supplies (03/2022)
 - Community Groundwater Well
 - Proposed Well
 - Transient Non-Community

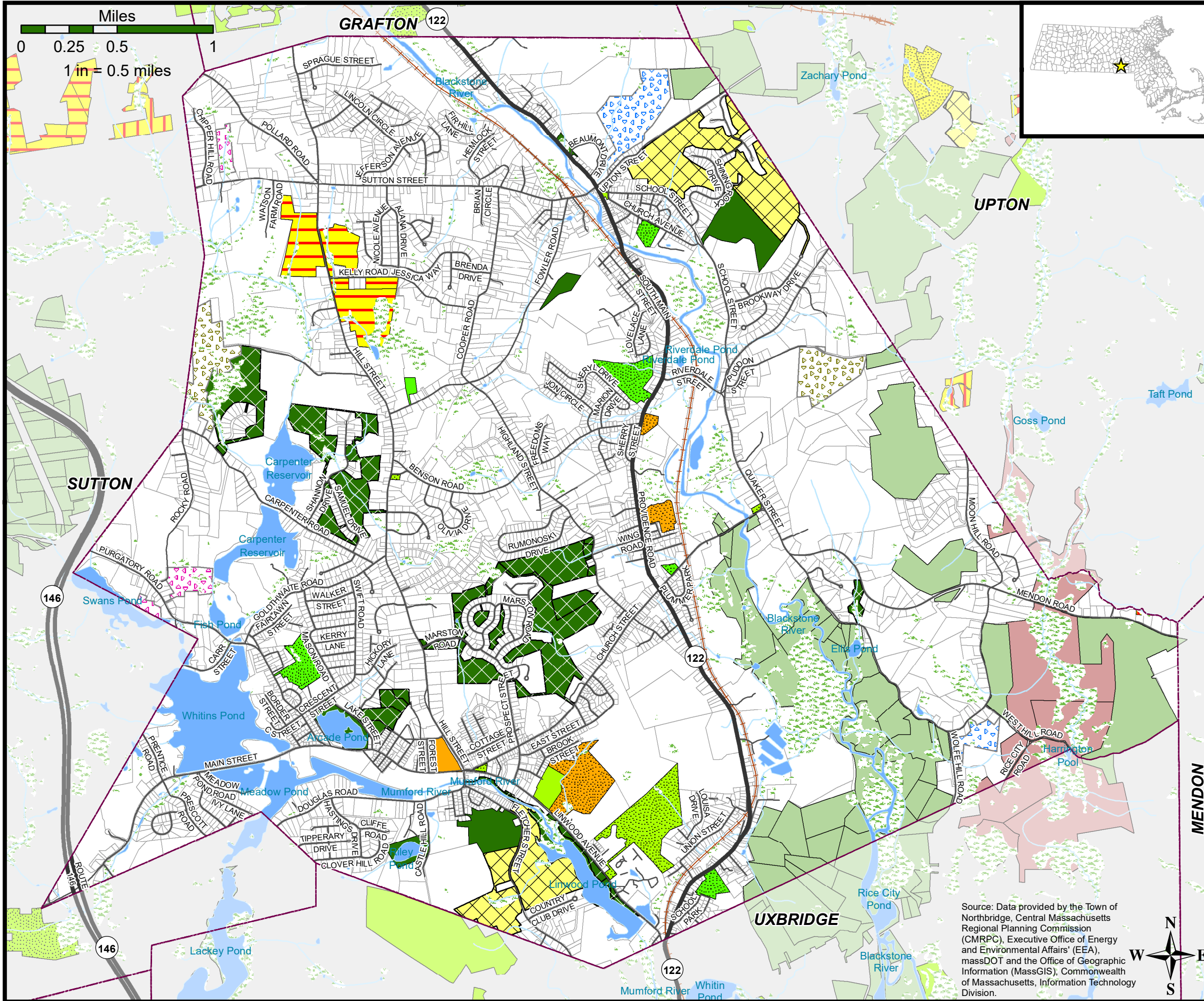
Source: Data provided by the Town of Northbridge, Central Massachusetts Regional Planning Commission (CMRPC), Executive Office of Energy and Environmental Affairs' (EEA), massDOT and the Office of Geographic Information (MassGIS), Commonwealth of Massachusetts, Information Technology Division.

Information depicted on this map is for planning purposes only. This information is not adequate for legal boundary definition, regulatory interpretation, or parcel-level analysis. Use caution interpreting positional accuracy.



Produced by
One Mercantil Street
Suite 520
Worcester, MA 01608

Town of Northbridge 2022-2029 Open Space & Recreation Plan




Legend

- Town Boundary
- Major Road
- Local Road
- Active Rail Service
- River, Stream
- Lake, Pond
- MassDEP Wetlands
- Chapter Land (FY2022)
 - Chapter 61
 - Chapter 61A
 - Chapter 61B
- Conservation Restriction
- Agricultural Preservation Restriction
- Open Space Ownership
 - Federal
 - State
 - Municipal (Conservation)
 - Municipal (Recreation)
 - Municipal
 - Private
 - Non-Profit
- Level of Protection
 - Perpetuity*
 - Limited
 - None

* Open space listed as "Perpetuity" will only show a solid Ownership color.
* Open Space data current as of 08/2022.

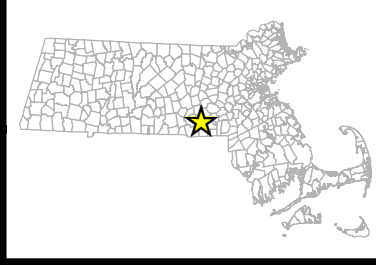
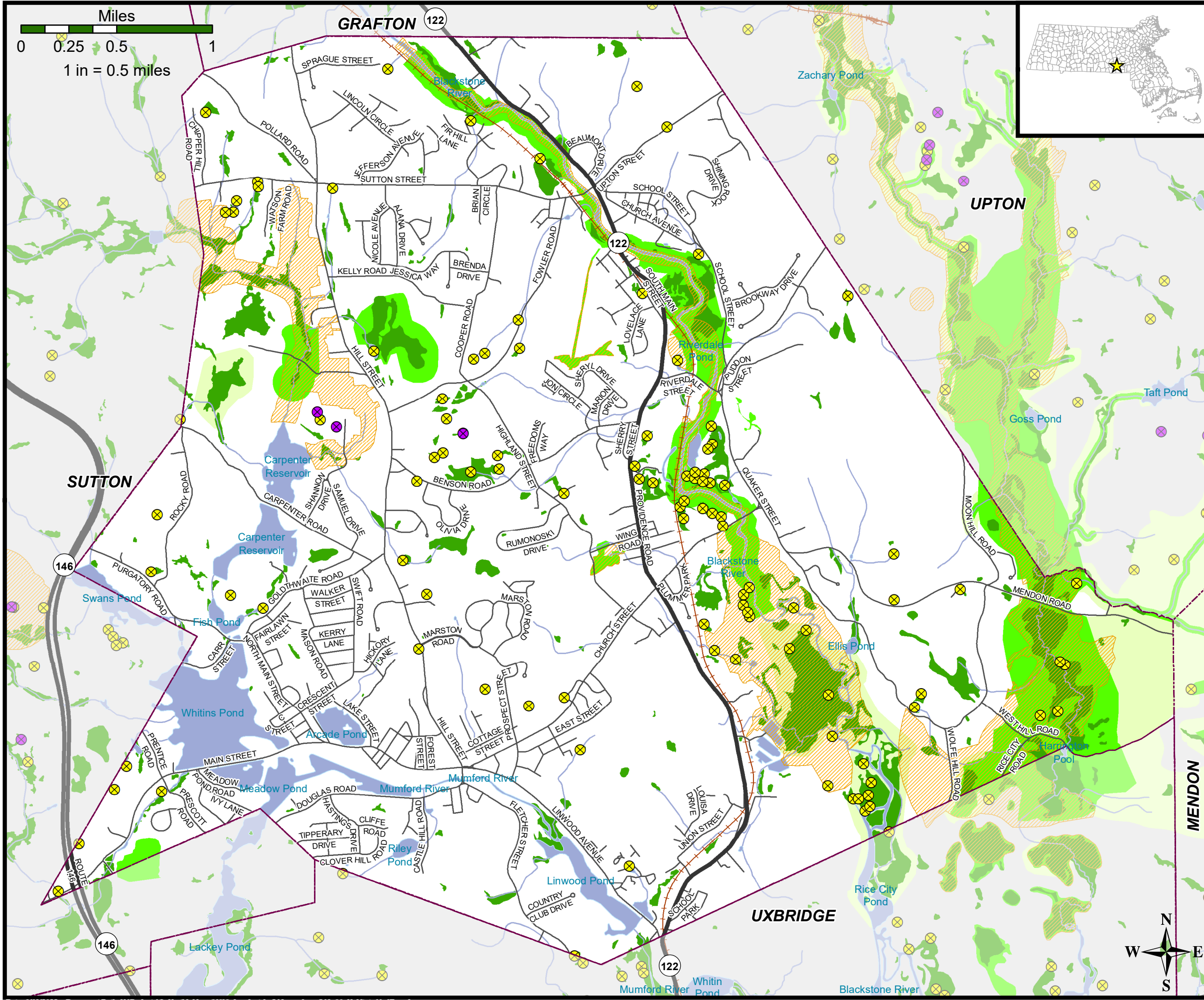
Source: Data provided by the Town of Northbridge, Central Massachusetts Regional Planning Commission (CMRPC), Executive Office of Energy and Environmental Affairs' (EEA), massDOT and the Office of Geographic Information (MassGIS), Commonwealth of Massachusetts, Information Technology Division.

Information depicted on this map is for planning purposes only. This information is not adequate for legal boundary definition, regulatory interpretation, or parcel-level analysis. Use caution interpreting positional accuracy.



Produced by
One Mercantil Street
Suite 520
Worcester, MA 01608

Town of Northbridge 2022-2029 Open Space & Recreation Plan



Legend

- Town Boundary
- Major Road
- Local Road
- Active Rail Service
- River, Stream
- Lake, Pond
- MassDEP Wetlands
- NHPSP Certified Vernal Pools (09/2022)
- NHPSP Potential Vernal Pools (1)
- NHPSP Priority Habitats of Rare (2017)
- NHPSP/TNC BioMap2 Core Habitat
- NHPSP/TNC BioMap2 Critical Natural Landscape

Source: Data provided by the Town of Northbridge, Central Massachusetts Regional Planning Commission (CMRPC), Executive Office of Energy and Environmental Affairs' (EEA), massDOT and the Office of Geographic Information (MassGIS), Commonwealth of Massachusetts, Information Technology Division.

(1) NHPSP Potential Vernal Pools: NOT equivalent to Certified Vernal Pools

Information depicted on this map is for planning purposes only. This information is not adequate for legal boundary definition, regulatory interpretation, or parcel-level analysis. Use caution interpreting positional accuracy.



Produced by
One Mercantil Street
Suite 520
Worcester, MA 01608