



TOWN OF NORTHBRIDGE
LOCAL HISTORIC DISTRICT STUDY COMMITTEE

7 MAIN STREET
WHITINSVILLE, MASSACHUSETTS 01588

PHONE: (508) 234-2447

FAX: (508) 234-0821

AGENDA
TUESDAY, FEBRUARY 26, 2019

Northbridge Memorial Town Hall, 7 Main Street
Board of Selectmen Room
7:00 PM

PUBLIC FORUM / PROPERTY OWNERS' MEETING

- I. **MEETING CALLED TO ORDER**
- II. **WELCOME & INTRODUCTIONS**
PLANNING BOARD, PROPERTY OWNERS & GENERAL PUBLIC
- III. **APPROVAL OF MEETING MINUTES**
AUGUST 14, 2018 & JANUARY 08, 2019
- IV. **WHITINSVILLE -LOCAL HISTORIC DISTRICT STUDY AREA**
JUSTIFICATION/NARRATIVE OF BOUNDARY/PROPERTIES
- V. **WHITINSVILLE -LOCAL HISTORIC DISTRICT STUDY AREA**
PUBLIC & PROPERTY OWNERS' COMMENT & INPUT
- VI. **WHITINSVILLE -LOCAL HISTORIC DISTRICT STUDY AREA**
PROPERTY OWNERS OPINION SURVEY
- VII. **WHITINSVILLE -LOCAL HISTORIC DISTRICT STUDY AREA**
EXEMPTIONS (LHD BYLAW)
- VIII. **WHITINSVILLE -LOCAL HISTORIC DISTRICT STUDY AREA**
PROCESS, TIMELINE & NEXT STEPS
- IX. **CORRESPONDENCE**
- X. **ADJOURN MEETING**

Please note this LHDSC Agenda may be subject to change.

The next meeting of the LHDSC is scheduled for TBD

*[An audio recording of the meeting may be made to assist in the preparation of minutes; such recording will not be archived]
Meeting minutes shall serve as the official record of the LHDSC*

RECEIVED

19 FEB -5 PM 3:47

January 28, 2019



LOCAL HISTORIC DISTRICT STUDY COMMITTEE -WHITINSVILLE

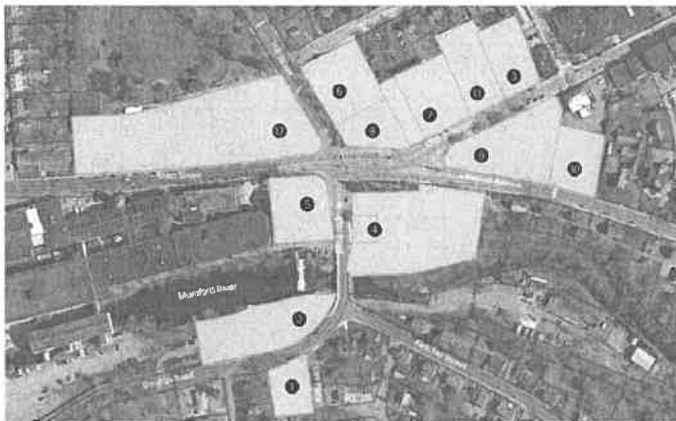
PUBLIC FORUM / PROPERTY OWNERS' MEETING

Tuesday, February 26, 2019 7:00 PM -Northbridge Memorial Town Hall

As you may know, the town is exploring the idea of creating a Local Historic District within the Village of Whitinsville. In 2017, a Local Historic District Study Committee (LHDSC) was established to study and recommend properties for inclusion, as well as draft a local bylaw ordinance for Town Meeting consideration.

At its meeting in January 2019, the LHDSC identified twelve (12) properties located at the main crossroads of the village of Whitinsville, focused along Memorial Square and the Mumford River locus area.

The 12 properties: Fletcher House; Paul Whitin Mill; Granite Cotton Mill; Northbridge Memorial Town Hall; Aldrich School; Whitin Community Center; Whitinsville Savings Bank; Town Common; Whitinsville Social Library; Trinity Episcopal Church; Village Congregational Church; & Congregational Parsonage represent the growth of a paternalistic mill village, from the beginnings of the Industrial Revolution planned and developed by the Whitin family.



The proposed Whitinsville Local Historic District reveals the story of how the Industrial Revolution transformed Whitinsville into one of New England's leading mill villages between the late 1700's to the mid 1900's. The properties selected represent industrial, civic, religious, governmental, recreational, and business commerce during the growth of the village, originally called South Northbridge and later renamed Whitinsville in 1835.

The LHDSC invites you to attend a Public Forum/Property Owners' Meeting on **Tuesday, February 26, 2019 (7PM -Town Hall, 7 Main Street, Whitinsville, MA)** to discuss & review justifications for the selection of properties and provide opportunity for the public to offer input to the LHDSC on establishing a local historic district within Whitinsville. Attendees will also be asked to complete a brief survey to gauge the public's thoughts & opinions on this ongoing initiative, as well as identify potential exemptions from a local historic district bylaw review.

The LHDSC looks forward to your participation and appreciates any feedback. For more information please contact the Community Planning & Development Office at (508) 234-2447 or planning@northbridgema.org

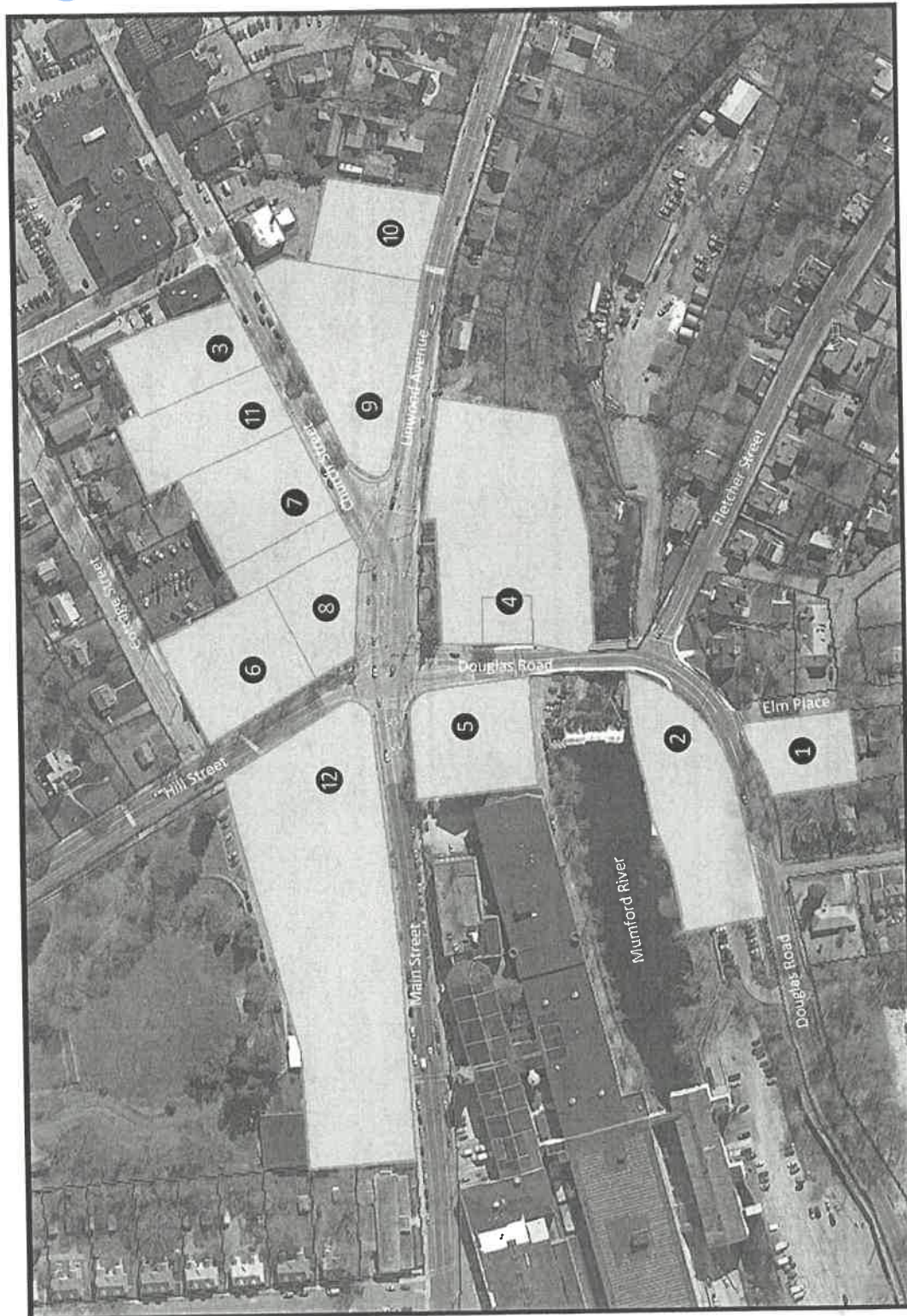
Harry Berkowitz, Chair
Kenneth Warchol, Vice Chair
Daniel O'Neil, Clerk

Robert Laflamme, Member
Randi Zanca, Member
Timothy Reiter, Member

COPY

19 FEB -5 PM 3: 47

NORTHBRIDGE TOWN CLERK
DORIS A. CLARKE



[proposed properties of LHD]

WHITINSVILLE -LOCAL HISTORIC DISTRICT (Downtown Cross-Roads)

- | | |
|--|---|
| 1 Fletcher House (circa 1770) | 7 Village Congregational Church (circa 1898) |
| 2 Paul Whitin Mill (circa 1826) | 8 Whitinsville Savings Bank (circa 1905) |
| 3 Whitin House/Congregation Parsonage (circa 1835) | 9 Town Common/Civil War Memorial (circa 1905) |
| 4 Granite Cotton Mill (circa 1845) | 10 Trinity Episcopal Church (circa 1911/1929) |
| 5 Northbridge Memorial Town Hall (circa 1876) | 11 Whitinsville Social Library (circa 1913) |
| 6 Aldrich School (circa 1890) | 12 Whitin Community Center (circa 1922) |



PROPOSED -January 17, 2019