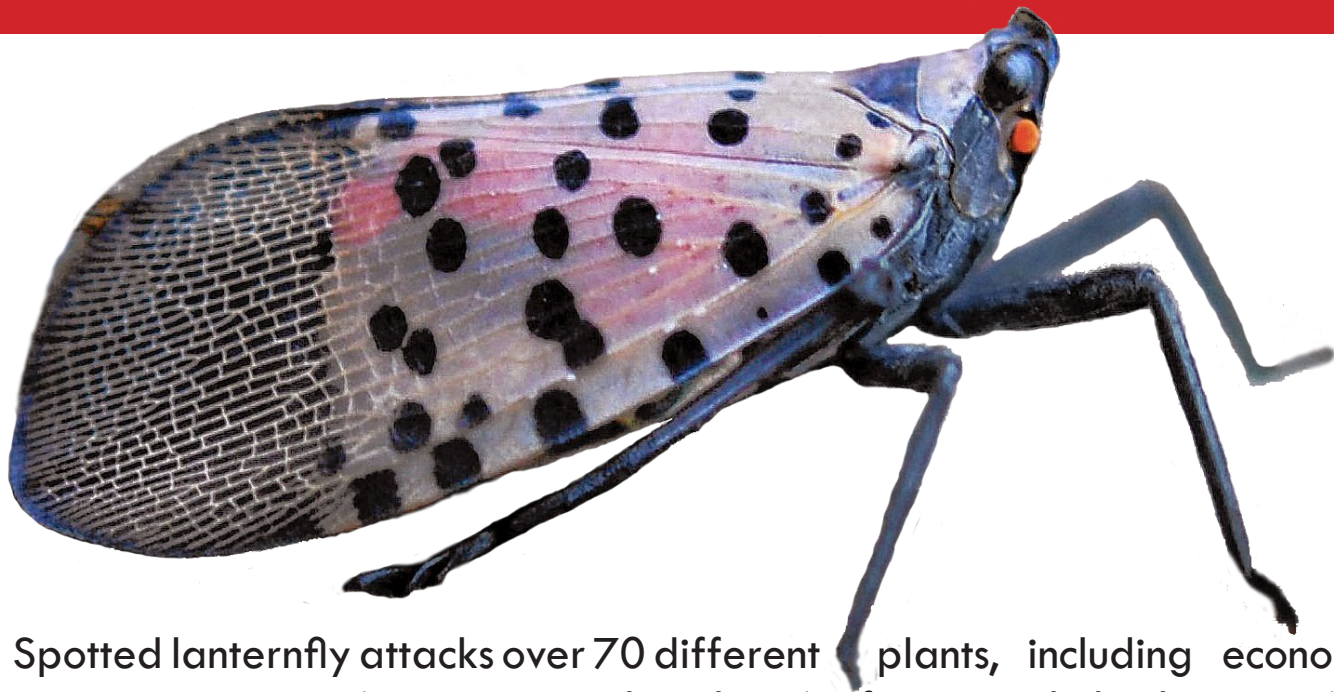


STOP THE SPREAD OF SPOTTED LANTERNFLY



Spotted lanternfly attacks over 70 different plants, including economically important crops (grapes, apples, hops), forest and shade trees (maple, willow, birch), and the invasive tree of heaven.

This pest has now been spotted in several parts of Massachusetts.

WE NEED YOUR HELP TO STOP IT BEFORE IT BECOMES ESTABLISHED



Egg masses
(Sept.-June)



Early nymphs
(April-July)



Late nymphs
(July-Sept.)



Adults
(July-Dec.)



HAVE YOU SEEN THIS INSECT? GET A PHOTO AND REPORT IT!

[MASSNRC.ORG/PESTS/SLF](https://massnrc.org/pests/slf)



Scan this QR Code, or call 617-626-1779



Possible Spotted Lanternfly Egg Mass Look-alikes in Virginia

Theresa Dellinger and Eric Day, Dept. of Entomology, Virginia Tech

Egg masses of the spotted lantern fly, *Lycorma delicatula* (White), are usually covered with a smooth tan to gray colored coating when fresh. This coating may crack and fall off with age, exposing eggs laid in vertical rows underneath. Some egg masses are laid with only some or no covering at all. Here are a few other insect egg masses found in Virginia to help you recognize those of the spotted lantern fly. Sizes not to scale.



Spotted lanternfly egg mass
Kenneth R. Law, USDA APHIS PPQ,
Bugwood.org



Spotted lanternfly eggs
without covering. Kenneth R. Law,
USDA APHIS PPQ, Bugwood.org



Gypsy moth egg masses
covered with brown hairs.
Karla Salp, WA State Dept. of Ag,
Bugwood.org



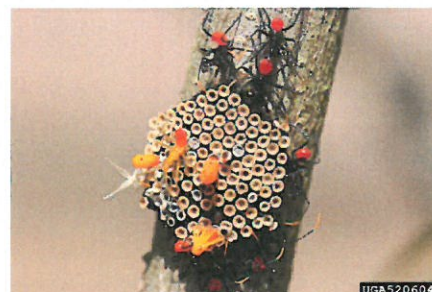
Chinese mantis egg case Whitney
Cranshaw, CO State Univ., Bugwood.org



Eastern tent caterpillar eggs Whitney
Cranshaw, CO State Univ., Bugwood.org



Cankerworm eggs PA Dept. of
Conservation and Natural Resources -
Forestry, Bugwood.org



Wheel bug eggs and nymphs
Johnny N. Dell, Bugwood.org



Lichen on bark
Eric Day, Virginia Tech

2018

ENTO-276NP

Possible Spotted Lanternfly Adult Look-alikes in Virginia

Theresa Dellinger and Eric Day, Department of Entomology, Virginia Tech

The adult spotted lanternfly, *Lycorma delicatula* (White), has a very distinctive appearance with black spots and bars on the upper wings and red, black, and white on the hindwings. Adults measure about 1" long and 0.5" wide. A few other insects in Virginia have similar color patterns, but a close look will show that spotted lanternfly is easily recognizable. Sizes not to scale. Upper left photo: Eric Day. All others: Bugwood.org



**Spotted
Lanternfly**

Eric Day, Virginia Tech



**Spotted lanternfly,
wings extended**

Lawrence Barringer, Pennsylvania
Department of Agriculture



Ornate bella moth

Lesley Ingram, Bugwood.org



Ailanthus webworm

David Cappaert, Bugwood.org



Tiger moth

Mark Dreiling, Bugwood.org



Oak treehopper

Larry R. Barber, USDA Forest
Service, Bugwood.org



Buck moth

Gerald J. Lenhard
Louisiana State University, Bugwood.org



Leopard moth

Negin Almassi, Forest Preserves
of Cook County, Bugwood.org

2018

ENTO-278NP

Possible Spotted Lanternfly Immature Look-alikes in Virginia

Theresa Dellinger and Eric Day, Department of Entomology, Virginia Tech

Immature spotted lanternfly, *Lycorma delicatula* (White), are black with white spots when young. They turn red and black with white spots when older. A few other insects in Virginia have similar color patterns, but a close look will show that immature spotted lanternflies are easily recognizable. Sizes not to scale.



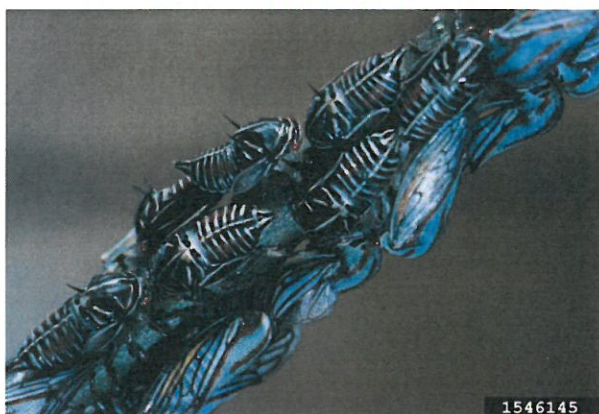
Young spotted lanternfly nymph
Berks Co. Conservation Dist.



Older spotted lanternfly nymphs
Eric Day, Virginia Tech



Wheel bug nymph
Susan Ellis, Bugwood.org



Oak treehopper nymphs
*Southern Forest Insect Work Conf.,
Bugwood.org*



Assassin bug nymph
Susan Ellis, Bugwood.org

2018 ENTO-278NP