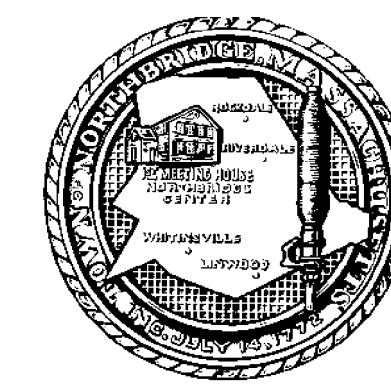




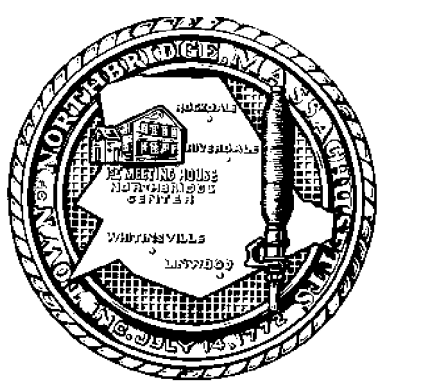
Source: Data provided by the Town of Northbridge, the Central Massachusetts Regional Planning Commission (CMRPC), the Massachusetts Office of Transportation Planning Geospatial Resources Section and the Office of Geographic Information (MassGIS), Commonwealth of Massachusetts, Information Technology Division.

Information depicted on this map is for planning purposes only. This information is not adequate for legal boundary definition, regulatory interpretation, or parcel-level analysis. Use caution interpreting positional accuracy.

Produced by the Central Massachusetts Regional Planning Commission (CMRPC), 2 Washington Square - Union Station, Worcester, MA 01604

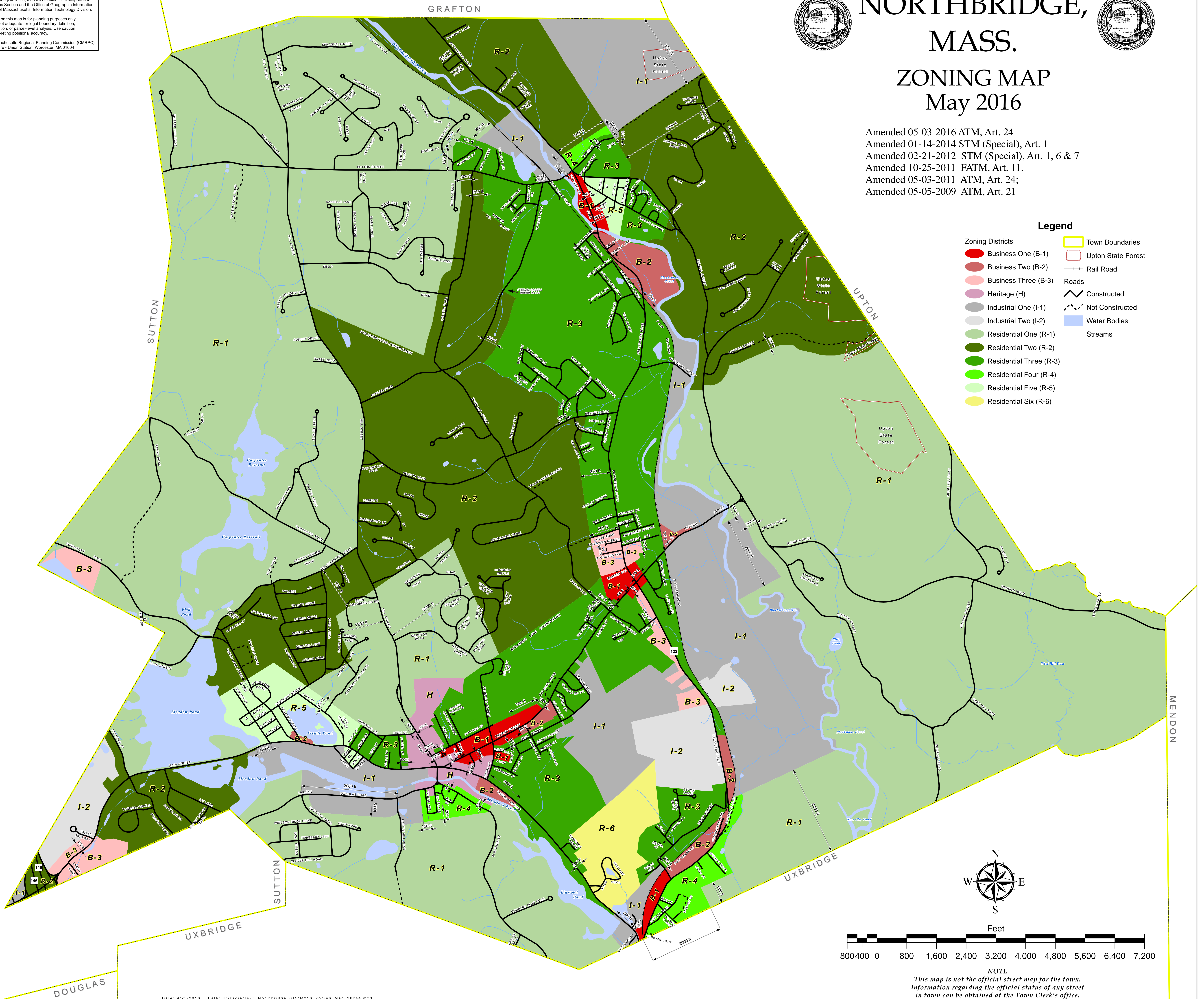


NORTHBRIDGE, MASS.



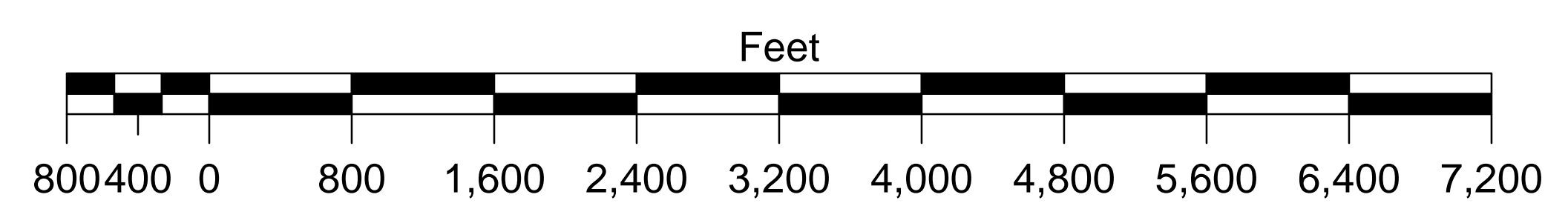
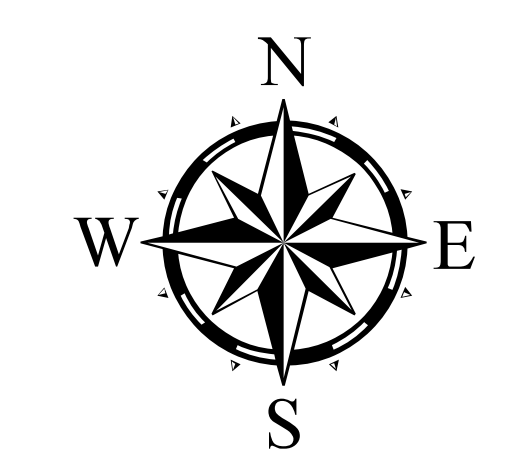
ZONING MAP May 2016

Amended 05-03-2016 ATM, Art. 24
Amended 01-14-2014 STM (Special), Art. 1
Amended 02-21-2012 STM (Special), Art. 1, 6 & 7
Amended 10-25-2011 FATM, Art. 11.
Amended 05-03-2011 ATM, Art. 24;
Amended 05-05-2009 ATM, Art. 21



Legend

- | | |
|-------------------------|--------------------|
| Business One (B-1) | Town Boundaries |
| Business Two (B-2) | Upton State Forest |
| Business Three (B-3) | Rail Road |
| Heritage (H) | Roads |
| Industrial One (I-1) | Constructed |
| Industrial Two (I-2) | Not Constructed |
| Residential One (R-1) | Water Bodies |
| Residential Two (R-2) | Streams |
| Residential Three (R-3) | |
| Residential Four (R-4) | |
| Residential Five (R-5) | |
| Residential Six (R-6) | |



NOTE
This map is not the official street map for the town. Information regarding the official status of any street in town can be obtained at the Town Clerk's office.