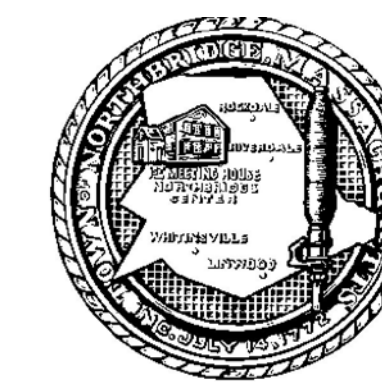


NORTHBRIDGE, MASS.

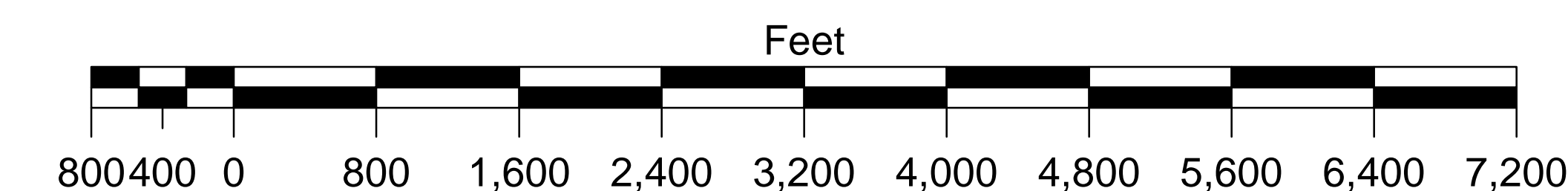
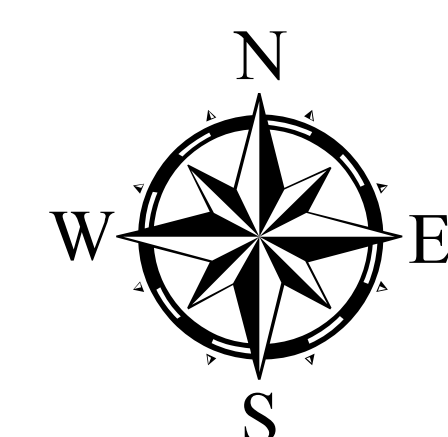
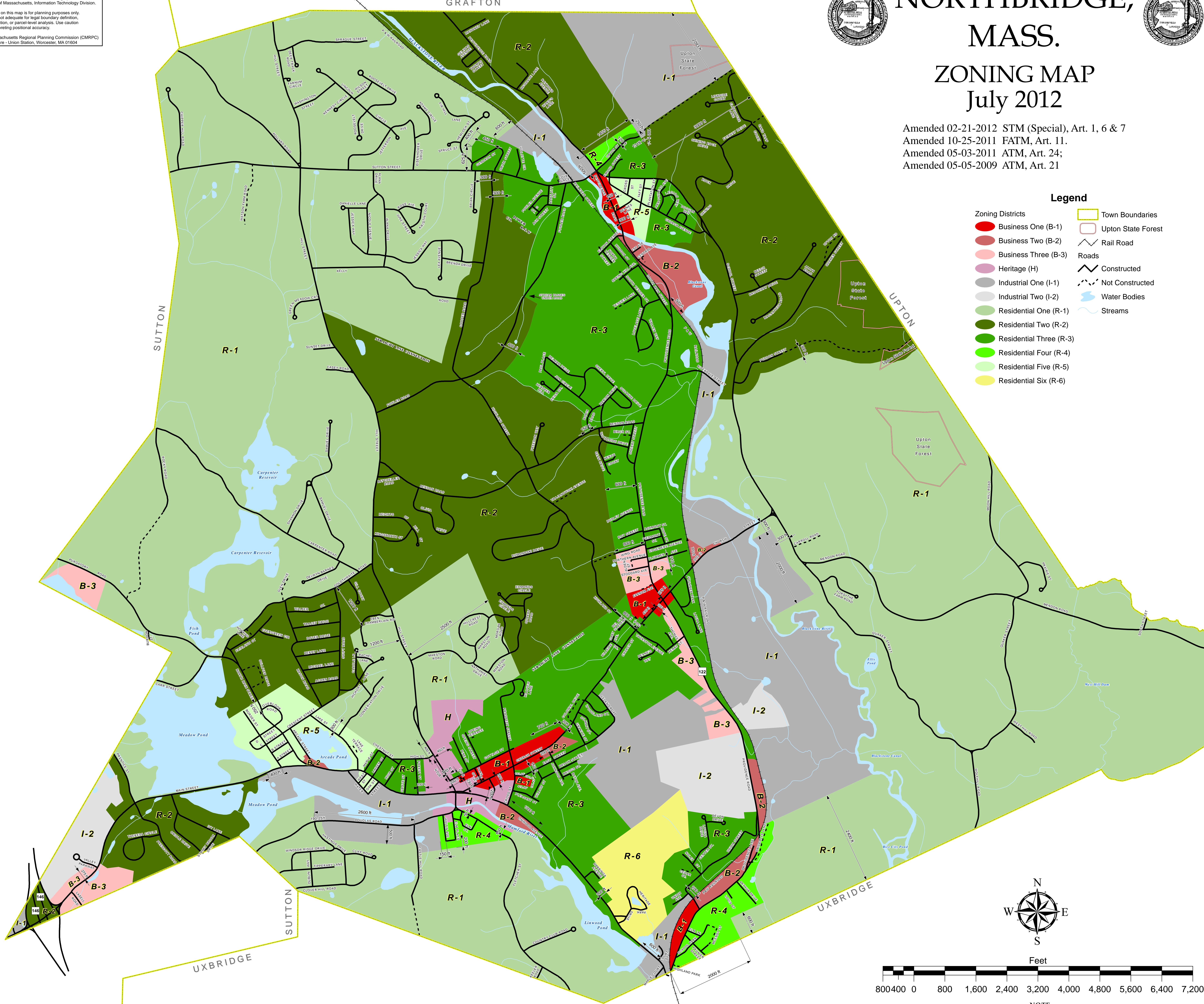


ZONING MAP July 2012

Amended 02-21-2012 STM (Special), Art. 1, 6 & 7
Amended 10-25-2011 FATM, Art. 11.
Amended 05-03-2011 ATM, Art. 24;
Amended 05-05-2009 ATM, Art. 21

Legend

- | | |
|-------------------------|--------------------|
| Zoning Districts | Town Boundaries |
| Business One (B-1) | Upton State Forest |
| Business Two (B-2) | Rail Road |
| Business Three (B-3) | Roads |
| Heritage (H) | Constructed |
| Industrial One (I-1) | Not Constructed |
| Industrial Two (I-2) | Water Bodies |
| Residential One (R-1) | Streams |
| Residential Two (R-2) | |
| Residential Three (R-3) | |
| Residential Four (R-4) | |
| Residential Five (R-5) | |
| Residential Six (R-6) | |



NOTE
This map is not the official street map for the town.
Information regarding the official status of any street
in town can be obtained at the Town Clerk's office.