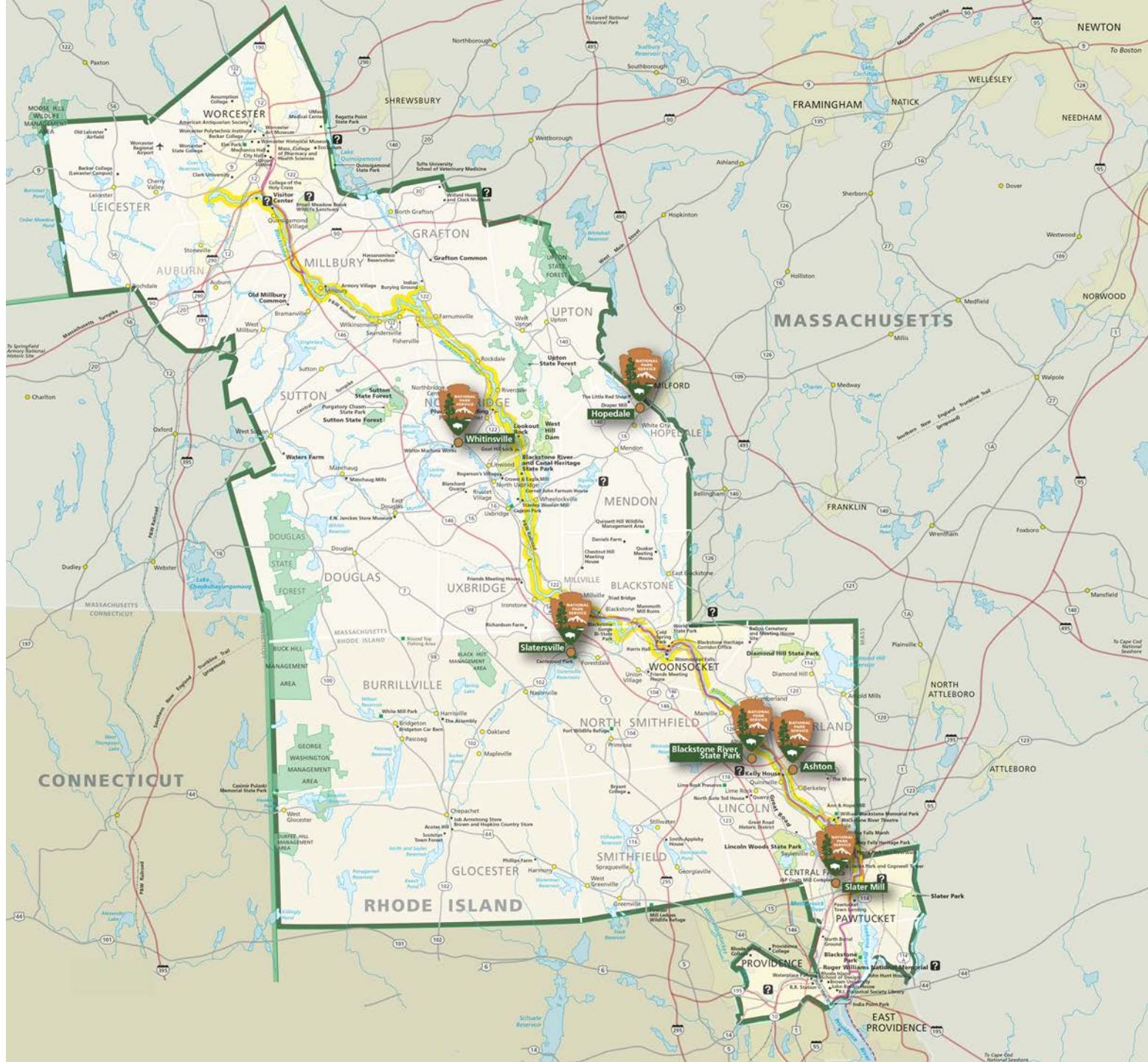


# A New National Park

- Legislation passed Dec. 19, 2014
- Authorized and Established – need to determine boundary
- The six park nodes included in the park's legislation:
  - Blackstone River State Park
  - Old Slater Mill National Historic Landmark District
  - Slatersville Historic District
  - Ashton Historic District
  - Whitinsville Historic District
  - Hopedale Village Historic District
  - The Blackstone River and tributaries
  - The Blackstone Canal



# Why Whitinsville?

From the Park's Special Resource Study, 2011

The mill villages described [in the Special Resource Study] were highlighted...because of their particularly high level of physical integrity and completeness and the outstanding visitor experience potential that they offer in terms of opportunities for education, interpretation, and further study.

# Why Whitinsville?

- This is where the machining story is best told; not just the buildings associated with the industry that are still intact here but the place where the machinery was developed that drove the industry
- Whitinsville allows us to talk about technology and innovation, relevant to today's high tech world
- The historic fabric in Whitinsville helps us to understand the complex relationship between the skilled machine workers and the unskilled cotton mill workers
- Whitinsville illustrates the ultimate example and evolution of the RI system of manufacturing and mill villages

# Why Whitinsville?

- The inclusion of mill worker, middle management and mill owner housing in the Local Historic District enables us to interpret the many layers of the fabric of the community—ethnic, economic, and architectural
- The universal story that we can tell here is about this community's people; how and where they lived and worked; where and how they spent their free time
- 200 years later, Whitinsville is home to a viable, active community that shows the same spirit of innovation

*You've done your part in preserving and maintaining this community's historic fabric.*

*The NPS is excited to work with you to ensure its continued care and celebration.*